



SCHOOL WILL BE BACK IN SESSION SOON

August 17th for 5th & 9th Graders

August 18th for all other grades

School Zone Caution Lights on 1st Street will be on before school from 7:30 AM until 8:30 AM and after school from 3:15 PM until 4:00 PM



The following is a list of phone numbers for City departments:

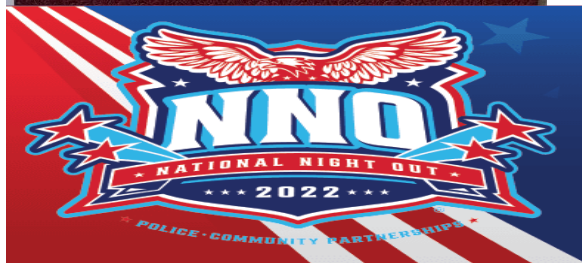
City Hall, Code Enforcement & Fire (non-emergency) (785) 742-7417

Police (non-emergency) (785) 742-2156

Parks & Recreation (785) 742-7176

Streets, Water & Lights (785) 742-7850

Sewer (785) 742-3196



**SAVE THE DATE
AUGUST 2, 2022**

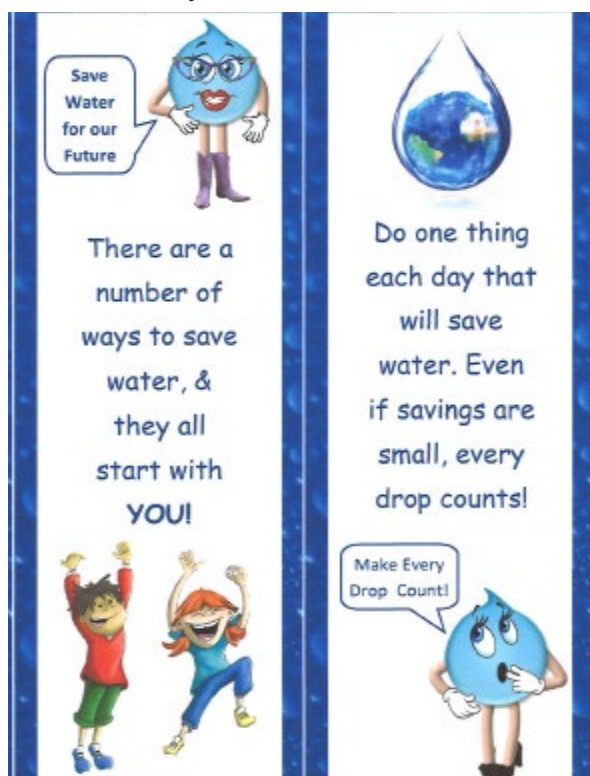


Hiawatha Municipal Code states that grass and weeds should not exceed 8 inches. Please keep your properties mowed and maintained as this shall lessen the possibility of unwanted animals and pests such as snakes, rats, raccoon, skunks, etc.

Just a Reminder: Anyone not officially named on a utility account, will NOT be able to receive information regarding that account. This includes, but not limited to, account balance, disconnect due to leaks/relocation, change of address.

The City would like to remind citizens that **ONLY** limbs and brush are **ACCEPTED**. Leaves are accepted as well, but need to be dumped from plastic bags. Under state law, trash is **PROHIBITED** and is cause for immediate closure!

The City has provided this service to all citizens of Hiawatha and surrounding areas, so please report any persons violating the law to 785-742-2155. Please note that this property will also be monitored by cameras and City Staff.



Check out the City's Facebook pages to keep up to date with our upcoming events and information throughout the City!

City of Hiawatha, KS: <https://www.facebook.com/CityofHiawathaKs/>

Hiawatha Police Dept: <https://www.facebook.com/Hiawatha-Police-Department/>

Hiawatha Fire Dept: <https://www.facebook.com/HiawathaFireDepartment/>

Fisher Community Center: <https://www.facebook.com/FisherCc>

Aquatic Park: <https://www.facebook.com/HiawathaAquatic/>

Hiawatha Parks & Recreation: <https://www.facebook.com/City-Hiawatha-KS-Parks-and-Recreation/>



The Parks & Rec also can be followed on Instagram & Twitter to stay caught up on all upcoming and NEW programs!

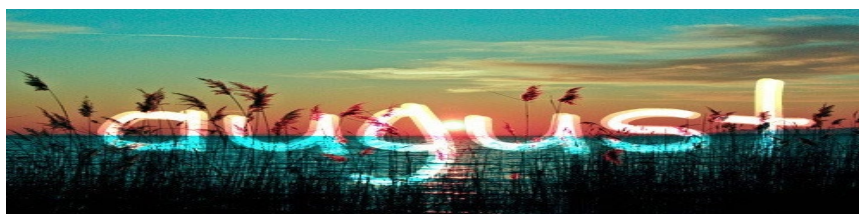
Sign up today for TextCaster. Get notifications regarding recreational programs, city news, street closings, job openings, and more.

No charge to sign up. <http://www.cityofhiawatha.org/text-caster>

It is the responsibility of all contractors, roofers, electricians, plumbers/mechanicals and tree trimmers to come to City Hall to register for a city license **up to two weeks prior** to starting a project. All roofers and/or roofing companies must be licensed with the Kansas State Attorney General's Office prior to performing work or soliciting business within the city limits. **This is a State Law!**

A permit must be obtained by the property owner or contractor before any work on the property can commence. **A permit can take up to 10 days for approval.**

It is the responsibility of either the contractor or permit applicant to contact 1-800-DIG-SAFE! The utilities have up to three business days to locate lines.





Calendar of Events



August 2nd – Primary Election Day – Polls Open from 7:00 am – 7:00 pm at the Fisher Center



August 2nd – National Night Out – hosted by Hiawatha Police Dept at the Fisher Center



August 7th – Back to School Carnival Night at Aquatic Park - TBA



August 8th – Commission Meeting @ 5:35 pm



August 13th – Last day for Aquatic Park to be opened for the season



August 22nd – Commission Meeting @ 5:35 pm



September 5th – All City Offices CLOSED in observance of Labor Day



September 12th – Commission Meeting @ 5:35 pm

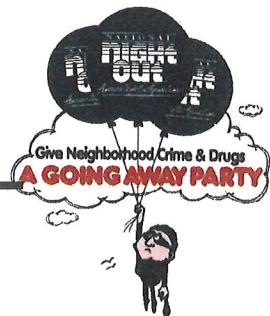


September 26th – Commission Meeting @ 5:35 pm

HIAWATHA'S NIGHT OUT AGAINST CRIME TUESDAY, AUGUST 2, 2022



**HIAWATHA POLICE DEPARTMENT'S
ANNUAL NATIONAL NIGHT OUT
AUGUST 2, 2022, 6PM - 8PM @ FISHER CENTER
POOL PARTY 6:00PM - 8:00PM
(HIAWATHA AQUATIC PARK)
DISPLAYS BY LOCAL LAW ENFORCEMENT
AND EMERGENCY RESPONSE AGENCIES
REFRESHMENTS WILL BE SERVED**





UNDER THE SEA THRIFTY PROM

FRIDAY, AUGUST 12 AT 6:00 PM

For this year's end-of-summer celebration, the library is throwing a thrifty prom! Participants are encouraged to shop at BCDS or another thrift shop to find their perfect prom attire.

The theme is Under the Sea and the evening will feature fun decorations, photo opportunities, both tabletop and lawn games, and the best of all - tacos! Rogue Street Tacos is catering the event!

Come and celebrate with the library for all you accomplished over the summer!



Ash trees near death due to EAB

Emerald Ash Borer

Help slow the spread of this killer. Here are some ways you can help:

Don't move firewood

- ♦ EAB can be transported long distances in firewood. When you camp, leave your wood at home. Buy only local firewood, and burn it all before you leave. Once transported into new areas, EAB can become established and kill local trees.

Avoid planting ash trees

- ♦ EAB kills only ash trees. Choose other shade trees for landscaping.

Investigate potential EAB infestations

- ♦ Follow the steps in this brochure to determine whether your ash tree suffers from EAB or some other ailment.

Photo credits: top left—Joseph O'Brien, USDA Forest Service, Bugwood.org; top right—Daniel Herms, The Ohio State University, Bugwood.org; cover adult EAB—David Cappaert, Michigan State Univ., bugwood.org; cover emergence hole—Noppadol Paothong, MO Dept of Conservation

Resources

Not sure if your ash tree suffers from EAB? Call a certified arborist or forester for help. Use these websites to locate a qualified professional in your area:

International Society of Arboriculture
tinyurl.com/omsugc6

Kansas Forest Service
tinyurl.com/u58tavt

Kansas Arborists Association
tinyurl.com/28848pey

**For more information about EAB,
 visit the following websites:**

Kansas Forest Service
tinyurl.com/upjljn5

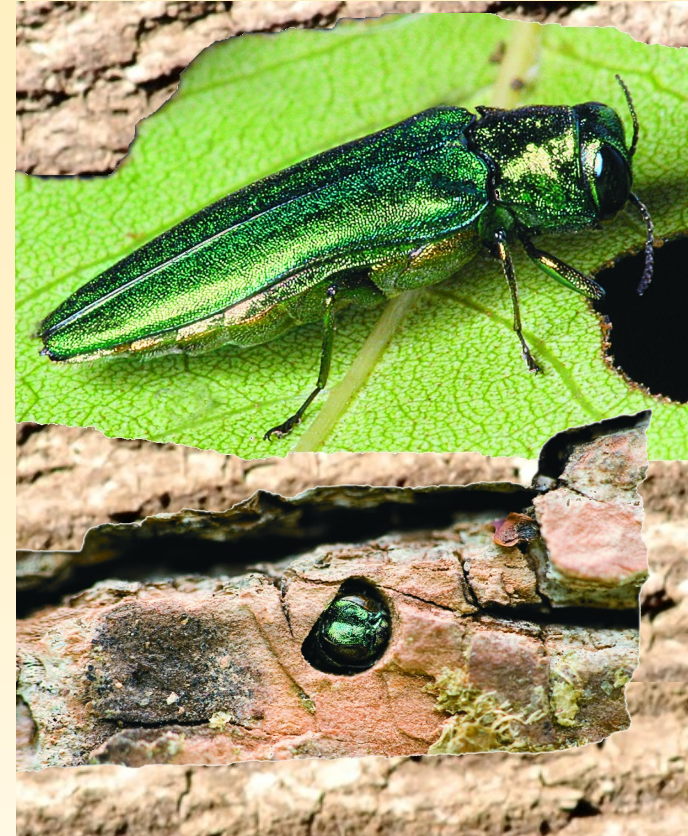
Kansas Dept. of Agriculture
tinyurl.com/3j7t7e84

www.emeraldashborer.info



K-STATE
 Research and Extension

Adapted from Emerald Ash Borer CSI. Copyright 2008 by the Conservation Commission of the State of Missouri. Used with permission.



Emerald Ash Borer CSI

**Are your ash trees dying?
 A small green beetle could be the culprit.
 Do some crime scene investigation to find out!**

CSI: YOUR ASH TREES

Dying ash trees. Winding S-shaped tunnels just under the bark. Small D-shaped holes on the trunk. Emerald Ash Borer (EAB) has destroyed millions of ash trees and has been found in at least 30 states. Help stop its spread! Use this brochure to investigate your yard or timber lot.

SUSPECT PROFILE

- ♦ Small metallic green beetle, ½ inch long
- ♦ Native to Asia
- ♦ Attacks only ash trees
- ♦ First detected in the U.S. in Michigan in 2002
- ♦ Spread to at least 23 states (as of July 2014)
- ♦ Larvae feed under bark, cutting off the flow of water and nutrients to the tree
- ♦ Travels in infested firewood and nursery stock



PART 1: IDENTIFY THE VICTIM

EAB attacks only ASH TREES.

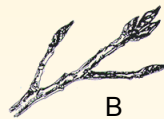
If your tree isn't an ash, you do not have EAB.

Step 1: Look at the tree's branches

☐ Oppositely branched as in Figure A?
If yes, go to step 2.



☐ Alternately branched as in Figure B? If yes, STOP! Your tree is not an ash.



Step 2: Look at your tree's leaves

☐ Simple—a single leaf joined by a stalk to a woody stem as in Figure C.
STOP! Your tree is not an ash.



☐ Compound—a group of leaflets joined by a stalk to a woody stem as in Figure D or E? Go to step 3.



Step 3: Look at the leaflets

☐ 3 to 5 leaflets, margin smooth or coarsely toothed as in Figure D? STOP! Your tree is not an ash.

☐ 5 to 9 leaflets, margin smooth or finely toothed as in Figure E? Your tree is an ash. Go to Part 2.



PART 2: EXAMINE THE VICTIM

Does your tree look healthy or is it showing signs of attack? Look for these clues. If your ash tree shows two or more of these symptoms, move on to Part 3.

Sparse leaves and/or branches dying in the upper part of the tree	New sprouts on the roots, lower trunk or lower branches	Short (3-5 inches), vertical splits in the bark
Increased activity of woodpeckers on the tree	Winding, S-shaped tunnels just under the bark	White or cream-colored larvae under the bark

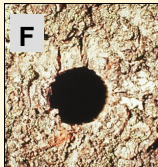
Photo credits clockwise from left: Daniel Herms, Ohio State University, Bugwood.org; James W. Smith, USDA APHIS PPQ, Bugwood.org; Joseph O'Brien, USDA Forest Service, Bugwood.org; Jim Rathert; Art Wagner, USDA APHIS PPQ, Bugwood.org; David Cappaert, www.forestryimages.org

PART 3: CHECK FOR EXIT WOUNDS

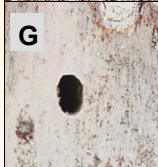
Step 1. Do you see multiple holes in the trunk of your ash tree? If so, what shape are they?

Tip: Use a knife to slightly shave the bark flat so you can gauge the true shape of the hole.

☐ Round as in Figure F?
STOP! EAB does not make round holes



☐ Oval-shaped as in Figure G?
STOP! EAB does not make oval holes



☐ D-shaped as in Figure H?
Go to step 2.



Step 2: How wide are the D-shaped holes?

☐ ¼ inch or wider?
STOP! EAB holes aren't usually this wide.

☐ About 1/8 inch. Your tree may be infested with EAB. Call (785) 564-6698

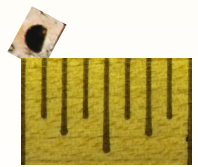


Photo credits: EAB on penny—Howard Russell, Michigan State Univ. Bugwood.org; F—Minnesota Dept. of Natural Resources Archive, bugwood.org; G—Hannes Lemme, Bugwood.org; H—Joseph O'Brien, USDA Forest Service, Bugwood.org